

Samsung DVM S Series, Slim Duct Unit

Job Name _____
 Purchaser _____
 Submitted to _____
 Unit Designation _____

Location _____
 Engineer _____
 Reference Approval Construction
 Schedule # _____

Specifications

Performance	Nominal Capacity ¹	Cooling (Btu/h)	18,000 (13,800 SH)
		Heating (Btu/h)	20,000
	Condensate	Pints/Hour	5.1
Power	Voltage	ø / V / Hz	1 / 208-230 / 60
	Nominal Running Current (A)		0.94
Fan	Type		Sirocco (3)
	Motor	Type	Non Feedback SSR(1)
		Output (W)	100
Airflow	CFM (UL)	H/M/L	547 / 494 / 441
	Total CFM Range ²		418 - 580
External Static Pressure	Standard	"WC	0.08
	Min. / Max.	"WC	0 / 0.16
Refrigerant	Type		R410A
	Control Method		Electronic Expansion Valve
Piping Connections	Liquid (flare)	Inches	1/4
	Suction (flare)	Inches	1/2
	Drain	Inches	VP25 (OD 1 1/4, ID 1)
Unit Dimensions	W X H X D	Inches	43 1/4 X 7 7/8 X 23 5/8
	Weight	lbs.	66
	Duct Connections (refer to drawing)	Supply (inches)	6 X 41 3/4
		Return (ID, inches)	38 7/16 X 6 11/16
Sound Level	H / L	dB	36 / 31
Accessories	Condensate Pump	<input type="checkbox"/>	MDP-E075SEE3D
	External Contact Control	<input type="checkbox"/>	MIM-B14
	Wireless Receiver Kit	<input type="checkbox"/>	MRK-A10N / MRW-10A
	External Temperature Sensor	<input type="checkbox"/>	MRW-TA
Safety Certifications		ETL & ETLc	



- Compatible with Samsung DVM S, DVM S Water, and DVM Eco systems (AM*****/AA).
- High-voltage terminal block temperature sensor to disable unit in the event overheating of power connection.
- Discharge air temperature sensor with target discharge temperature control capability

Construction

The unit shall be constructed of insulated, galvanized steel

Heat Exchanger

The heat exchanger shall be mechanically bonded fin to copper tube

Indoor Fan

Indoor fan is a centrifugal type with a single fan motor

Three fan speed settings and auto setting

Fan output can be configured during commissioning for various external static pressure ranges

Controls

The unit shall be operated via a wireless or wired remote control with DDC type signal

The unit shall integrate with the Samsung NASA Controls Network Solution

Controls shall integrate with a BMS system

Control wiring shall be 2 X 16 AWG shielded wire

Air Filtration

The unit shall ship with basic filtration as standard

Pressure drop across the filter must be factored into the total ESP.

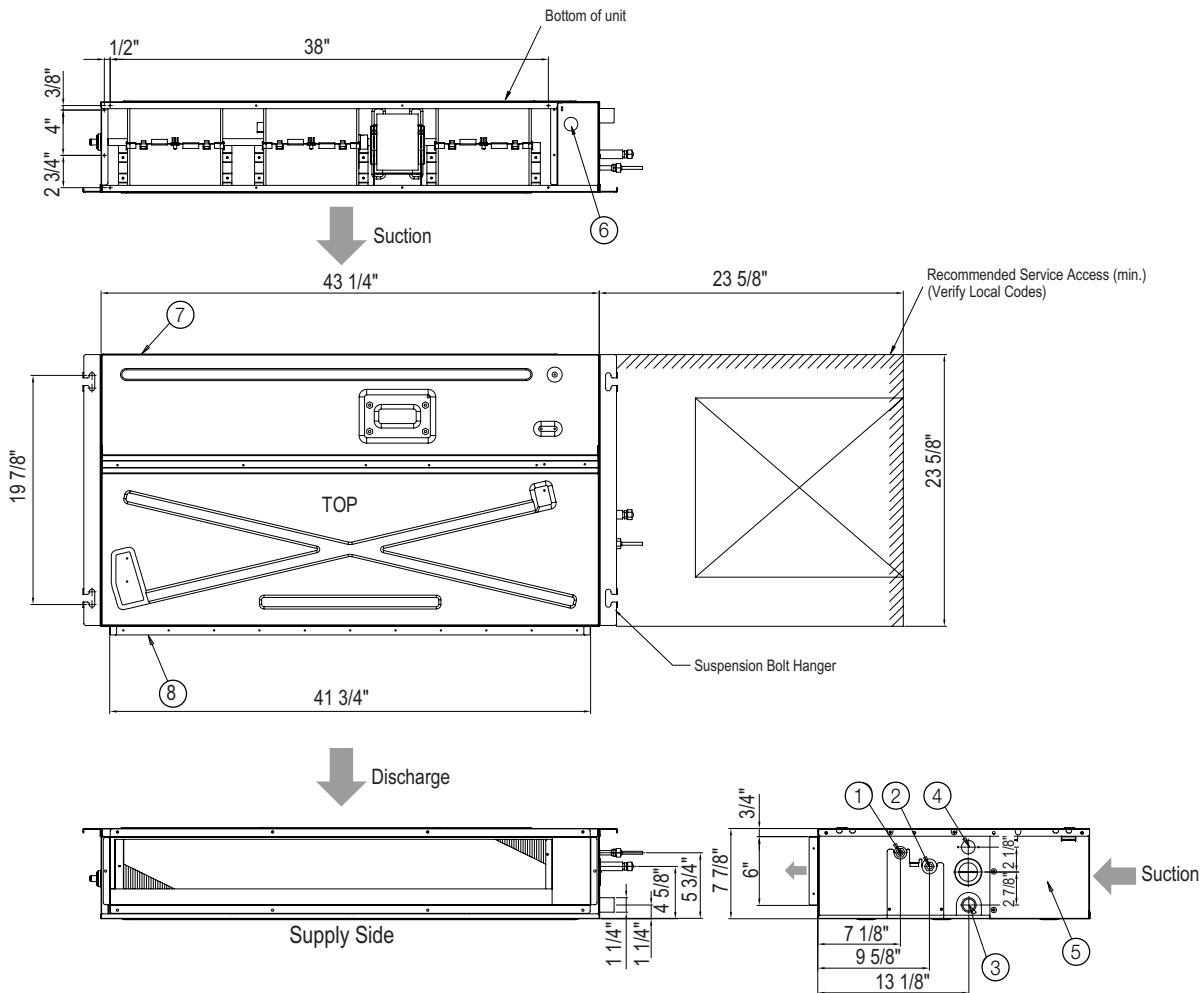
¹ Nominal cooling capacities are based on: Indoor temperature: 80 °F DB, 67°F WB. Outdoor temperature: 95°F DB, 75°F WB
 Nominal heating capacities are based on: Indoor temperature: 70 °F DB, 60°F WB. Outdoor temperature: 47°F DB, 43°F WB.

² Refer to technical data book for fan performance details and settings

Samsung HVAC maintains a policy of ongoing development, specifications are subject to change without notice.

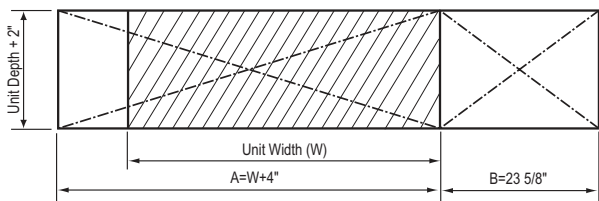


Samsung DVM S Series, Slim Duct Unit



No.	Name	Description
①	Liquid Pipe Connection	Ø 1/4" Flare
②	Gas Pipe Connection	Ø 1/2" Flare
③	Drain Pipe Connection, Without Condensate Pump	OD 1 1/4", ID 1"
④	Drain Pipe Connection, With Condensate Pump	Quick Lock
⑤	Controls Box	-
⑥	Conduit for Power & Communication Wiring	-
⑦	Return Air Side	-
⑧	Supply Air Outlet Duct Flange	-

Inspection Opening Requirements



In applications where there is not a tile ceiling, an inspection hole is required. If height between ceiling and structure is 3.25' or more, inspection opening "B" is recommended. If height between ceiling and structure is less than 3.25', inspection opening "A" and "B" is recommended. (verify state and local codes).

Unit Clearance From Structure

